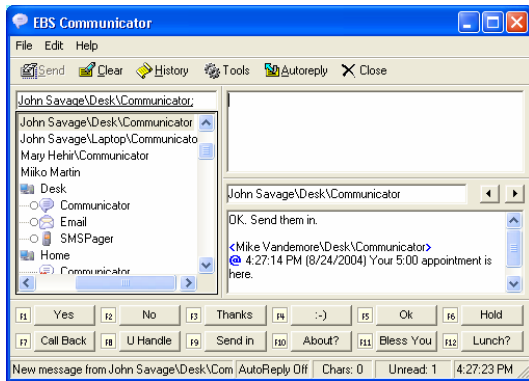


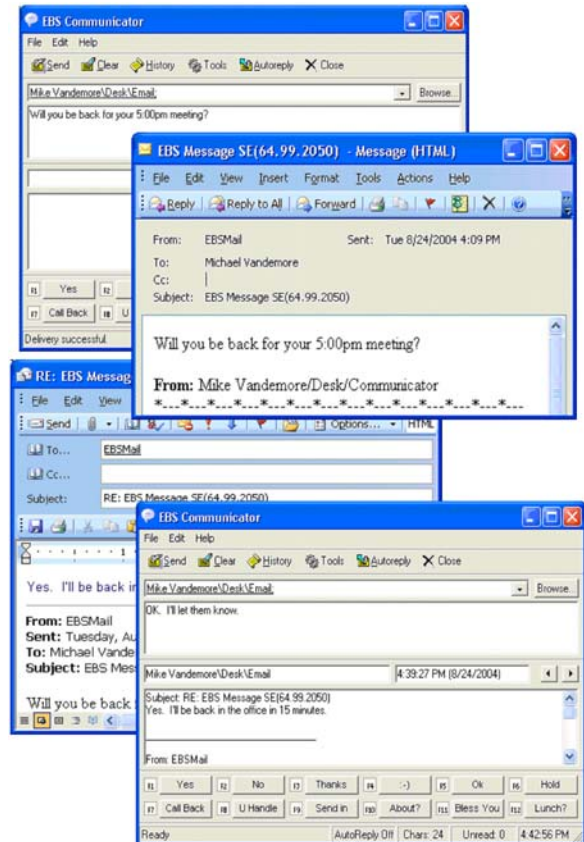
What is Communicator?

Communicator is instant messaging for business; customizable, secure and scalable.



Send and Receive Email, SMS and Pager Messages

Users can not only send messages to one another using Communicator, they can also send and receive Email, SMS and Pager messages.



Connect From Anywhere Securely

Communicator runs on top of a new infrastructure called EBS (Enterprise Business Services). Users can connect via a WAN or the Internet through just one TCP port. Offsite users (subject to administrative security) can easily be accommodated by opening a single port on the firewall. Communicator supports a number of industry standard encryption methods such as AES.

Scalability

EBS is a platform conceived to accommodate tens of thousands of users. Because of this design, there is virtually no limit on how many users can interact via Communicator.

Automated Updates

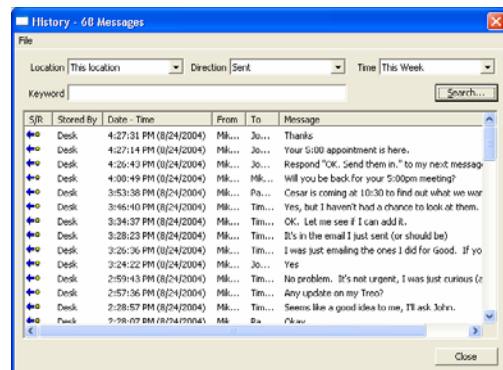
One of the central features of EBS is that new releases of the applications, such as Communicator, can be “pushed” out to the users’ desks. This means administrators do not have to visit each desk in order to roll out a new version.

Predefined Responses

Communicator allows users to define up to 24 “fast key” responses so that responses can be sent quickly and with minimal interruption.

Centralized History Storage

All messages sent or received are recorded on the server and are accessible to any user from any location.







IMIN Communicator

Secure Instant Messaging for Business

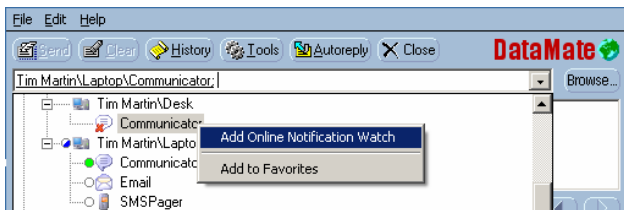
Presence Awareness

By looking in the tree you can see if a user is currently online and actively working on their computer.

- : Communicator is offline.
- : Communicator is online.
- : Communicator is in AutoReply mode.
- : Communicator is online, but the user has not typed or moved their mouse for a user defined extended period of time (15 minutes by default).

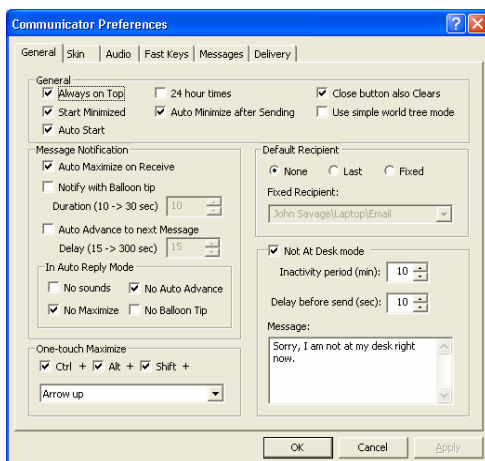
Online Notification

Communicator can be set to notify you when any user you select comes back online.



User Preferences

Communicator incorporates a number of features so that users, or their administrators, can customize the behavior of the user interface. All preferences are stored on the server so that regardless of where a user logs on they utilize the same preferences.

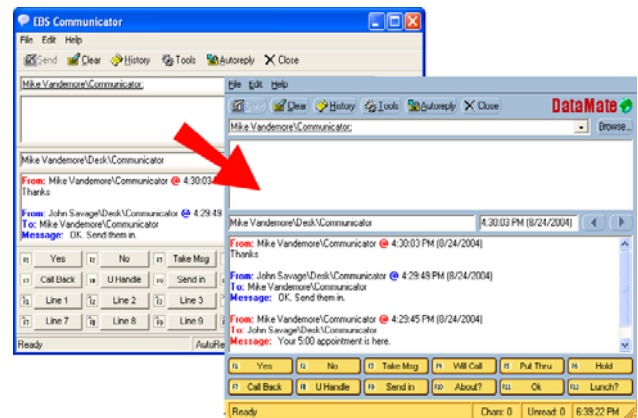


Zones / Groups

Users are now grouped by “sites” and “zones”. Users can also identify their “favorites” in order to simplify access to users.

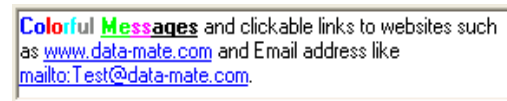
Pick Your Skin

The user interface for Communicator is entirely skin based. The entire look and feel of the interface can be changed by opening the Skin Browser (Edit->Preferences->Skin->Change...). You can pick a colorful skin such as Cool Blue or a practical skin which shows all 24 fast key buttons.



Formatted Messages

Communicator messages support different colors, clickable web URLs and Email addresses as well as bold, italics and underlined fonts. Right click the message edit control and use the context menu to change your messages characteristics.



Type Ahead

As you type the name of a user in the address bar, Communicator will present a dropdown list of possible matches after the second character.

